

## QT-FIT8 2X36/220...240

---

QUICKTRONIC FIT 8 | ECG for FL 26 mm



- Suitable for use in emergency lighting systems as per EN 50172/DIN VDE 0108-100

### Product benefits

---

- Perfect lamp start for applications with motion sensors
- Automatic restart after lamp replacement

### Product features

---

- Supply voltage: 220...240 V
- Line voltage: 198...264 V
- Line frequency: 0 Hz, 50 Hz...60 Hz
- Lamp start with optimum filament preheating
- Automatic shutdown of defective lamps and at end of life (EoL)
- Safety: to EN 61347-2-3
- Lamp operation: to EN 60929
- RI suppression: to EN 55015:2006+A1:2007+A2:2009/CISPR 15
- Line harmonics: to EN 61000-3-2
- Immunity: to EN 61547

## Technical data

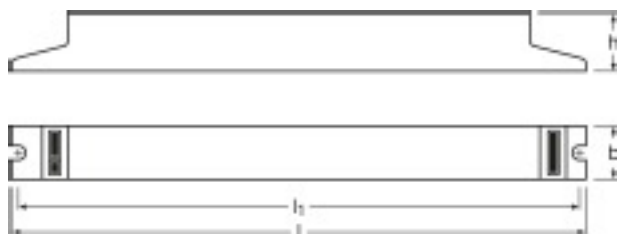
---

### Electrical data

Nominal voltage	220...240 V
Mains frequency	50...60 Hz
DC voltage	198...264 V
Operating frequency	40...50 kHz

### Dimensions & weight

Length	360.0 mm
Width	30.0 mm
Height	28.0 mm
Mounting hole spacing, length	350.0 mm
Product weight	229.00 g
Cable cross-section, output side	0.5...1.5 mm <sup>2</sup>
Cable cross-section, input side	0.5...1.5 mm <sup>2</sup>



Product line drawing with letters

**Temperatures**

Ambient temperature range	-15...+50 °C
---------------------------	--------------

**Capabilities**

Dimmable	No
Suitable for fixtures with prot. class	I
End of Life safety shutdown	EOL T.2

**Certificates & standards**

Approval marks – approval	VDE / VDE-EMC / ENEC 10 / CE
EEI – Energy Label	A2
Standards	acc. to EN 61347-2-3 / acc. to EN 60929 / acc. to EN 55015:2006 + A1:2007 / acc. to EN 61000-3-2 / acc. to EN 61547

## Lamp-ECG combination (System)

---

### L 32 W ES

---

Ambient temperature range	+10...+50 (°C)
---------------------------	----------------

---

#### Products

L 32W/830 ES

L 32W/840 ES

### L 36 W XT

---

Ambient temperature range	+15...+50 (°C)
---------------------------	----------------

---

#### Products

L 36W/830 XT

L 36W/840 XT

L 36W/865 XT

### L 36 W

---

Ambient temperature range	-15...+50 (°C)
---------------------------	----------------

---

Ташев-Галвинг ООД  
www.tashev-galving.com

**Products**

- L 36W/530
- L 36W/535
- L 36W/60
- L 36W/62
- L 36W/640
- L 36W/66
- L 36W/67
- L 36W/73
- L 36W/730 SMARTLUX
- L 36W/740 SMARTLUX
- L 36W/76
- L 36W/76 SPS
- L 36W/765
- L 36W/765 SMARTLUX
- L 36W/77
- L 36W/780
- L 36W/827
- L 36W/830
- L 36W/835
- L 36W/840
- L 36W/840 SPS
- L 36W/850
- L 36W/860
- L 36W/865
- L 36W/880 SKYWHITE
- L 36W/930
- L 36W/940
- L 36W/940 UVS
- L 36W/950 COLOR PROOF
- L 36W/954
- L 36W/954 UVS
- L 36W/965
- L 36W/965 BIOLUX

Ташев-Галвинг ООД  
www.tashev-galving.com

**L 58 W XT**

---

<b>Ambient temperature range</b>	-15...+50 (°C)
----------------------------------	----------------

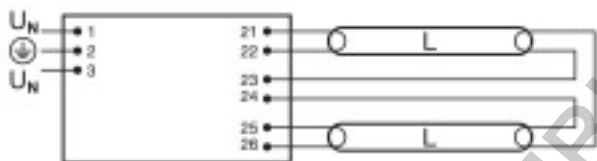
---

**Products**

L 58W/830 XT

L 58W/840 XT

L 58W/865 XT



*Wiring diagram*

Ташев-Галвинг ООД  
www.tashev-galving.com

**Logistical Data**

Product code	Packaging unit (Pieces/Unit)	Dimensions (height x width x length)	Gross weight	Volume
4008321294265	Unpacked 1	28 mm x 32 mm x 357 mm	242.14 g	0.32 dm <sup>3</sup>
4008321294272	Shipping carton box 20	159 mm x 132 mm x 383 mm	4831.00 g	8.04 dm <sup>3</sup>

Ташев-Галвинг ООД  
www.tashev-galving.com

## Disclaimer

---

Subject to change without notice. Errors and omission excepted. Always make sure to use the most recent release.

Ташев-Галвинг ООД  
[www.tashev-galving.com](http://www.tashev-galving.com)